



UNIVERSAL LED HIGH BAY



FLV Series 150W 25 000 Lumen



One single **UNIVERSAL** product for all your needs

- Canadian Universal Voltage 120 – 347V
- Adjustable between 2 500 and 25 000 Lumen

QUALITY IS IN THE DETAILS

ADJUSTABLE LUMEN OUTPUT

Option : A manual dimmer allows for easy light level adjustment on site.

Option: A motion sensor offering daylight harvesting with remote control allowing various adjustments for greater energy and cost savings.

PREMIUM QUALITY LED

High efficiency LED offers unparalleled energy savings and longer lifespan.

ALUMINIUM LED BOARD

Allowing for optimal LED cooling and a longer lifespan.

UNIVERSAL DRIVER

Voltage range of 120 - 347V
Dimming capability 0-10V
Supplied with a 6' cord.

ALUMINIUM HEAT SINK

This engineered aluminium extrusion is anodised and acts as an excellent heat sink

PC DIFFUSER

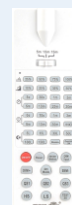
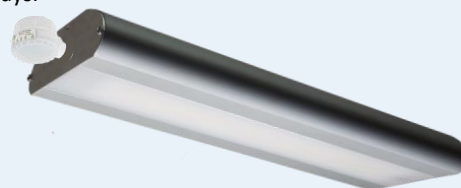
This option is designed to reduce glare and provide high light transmission

Elegant look • Easy maintenance

The unique FLV design makes the driver invisible from the ground level. This distinct feature also makes it easy to replace the driver !



Motion sensor with daylight harvesting capability with remote control (option). Flexible and customizable light level and delays.



ULTRA-FLEXIBLE: ALWAYS THE RIGHT PRODUCT IN STOCK

- ✓ **Always the right product in stock:** One single product can replace up to 10 different models !
- ✓ **Canadian universal voltage 120-347V**
- ✓ **On site adjustable light levels**
- ✓ **Replace high-bays 400W, 6T8 et 4T5HO and save !**
- ✓ **Rotary knob (option) or Motion sensor (option) with remote control for more savings**
- ✓ **Suitable for damp locations**
- ✓ **5-Year warranty**



DLC 5.1
Standard



UNIVERSAL HIGH BAY



FLV Series 150W 25 000 Lumen



One single **UNIVERSAL product** for all your needs

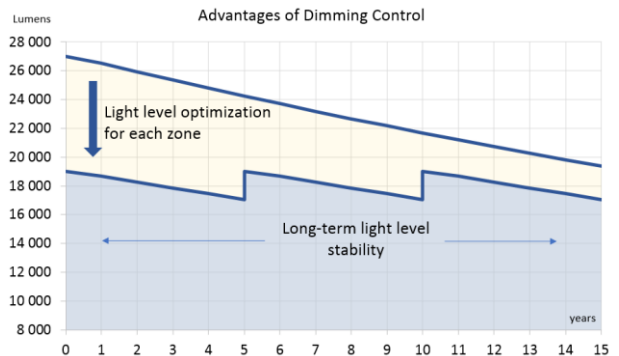
- Canadian Universal Voltage 120 – 347V
- Adjustable between 2 500 and 25 000 Lumen

RATINGS

Model no.	Lumen adjustable output (±10%)	Input Power (±10%)	Voltage	Relative intensity at 25°C		CCT / CRI	Adjustable lighting levels
				After 50 000 h	After 100 000 h		
FLV - 150 – 3500K - LV – MD FLV - 150 – 4000K - LV – MD FLV - 150 – 5000K - LV – MD	2 500 - 25 000	165 W	120 - 347V	86%	74%	3500K / 80 4000K / 80 5000K / 80	Manual dimmer
FLV - 150 – 3500K - LV – DOC FLV - 150 – 4000K - LV – DOC FLV - 150 – 5000K - LV – DOC RC-MK remote for DOC	2 500 - 25 000	165 W	120 - 347V	86%	74%	3500K / 80 4000K / 80 5000K / 80	Motion / daylight sensor (remote control required)

Option : frosted diffuser

- The typical Lumen may be affected by the CCT and ambient temperature.
- Remote control RC-MK (sold separately)
- Operating temperature: -40°C to 40°C
- Warehousing temperature: -40°C to 60°C



WEIGHT AND DIMENSIONS

Model	Length	Width	Height	Weight
FLV – 150 – xxxxK-LV-MD	480 mm	170 mm	58 mm	6 lb
FLV – 150 – xxxxK-LV-DOC	545 mm	170 mm	58 mm	6 lb

