



# LED HIGH BAY



## HL Series 40 000 Lumen 265 W



One single **UNIVERSAL** and **POWERFUL** product for all your needs

- Canadian universal voltage 120 – 347V
- Adjustable between 2 500 and 40 000 Lumen
- Over 100 000 hours of LED (L<sub>70</sub>) operations

### QUALITY IS IN THE DETAILS

#### MOTION SENSOR

Operated with a remote control that is fully customizable to each environment, providing a tailor-made light level and greater energy savings.



#### UNIVERSAL DRIVER

Voltage range of 120 - 347V, supplied with a 6' cord.

#### ALUMINIUM HEAT SINK

This engineered aluminium extrusion is anodised and acts as an excellent heat sink.

#### WATERPROOF (option)

Make this luminaire fully water and dust proof.

#### ALUMINIUM LED BOARD

Allows for optimal LED cooling and longer lifespan.

#### PC LENS

Designed to reduce glare, this polycarbonate lens provides high light transmissivity, while meeting UL1598/UL94 requirements.

#### PREMIUM QUALITY LED

High efficiency LED offers unparalleled energy savings and longer lifespan.

### FLEXIBLE: ALWAYS THE RIGHT PRODUCT IN STOCK

- ✓ **Always the right product in stock:** One single product can replace up to 10 different models !
- ✓ **Canadian universal voltage 120-347V**
- ✓ **On site adjustable light levels**
- ✓ **Replace your high-bays 400W, 6T8 et 4T5HO and save !**
- ✓ **Motion sensor with remote control for more savings**
- ✓ **Suitable for wet and damp locations (option)**
- ✓ **5-Year warranty**





# HIGH BAY DEL



## HL Series 40 000 Lumen 265 W

One single **UNIVERSAL** and **POWERFUL** product for all your needs

- Canadian universal voltage 120 – 347V
- Adjustable between 2 500 and 40 000 Lumen
- Over 100 000 hours of LED (L<sub>70</sub>) operations

### RATINGS

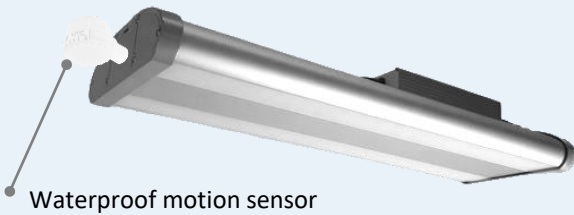
Model no.	Lumen adjustable output (±10%)	Input Power (±10%)	Voltage	Relative intensity at 25°C		CCT / CRI	Adjustable lighting levels
				After 50 000 h	After 100 000 h		
HL – 40 000 – 4000K - LV – DOC	2 500 - 40 000	265 W	120 - 347V	88%	79%	4000K / 80	Motion sensor (remote control required)
HL – 40 000 – 5000K - LV – DOC							
RC-MK remote control for DOC							

- Nominal Lumen (affected by the CCT and ambient temperature)
- Remote control RC-MK (sold separately)
- Wet location option add - WL

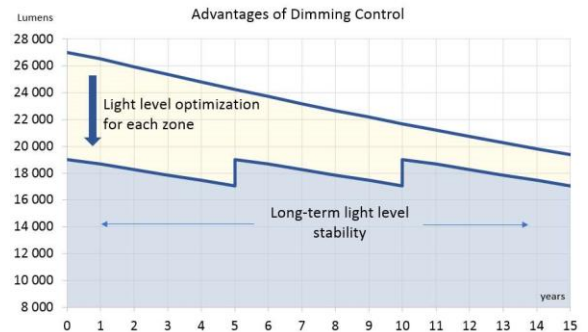
- Operating temperature: : -40°C to 45°C
- Storage temperature: -40°C to 60°C

### WATERPROOF (option)

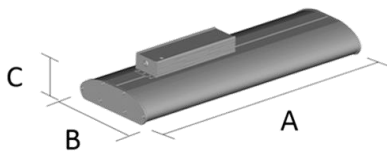
The addition of silicone gaskets allows for installation in wet locations.



### DIMMER CONTROL BENEFITS



### WEIGHT AND DIMENSIONS • INSTALLATION



Model	Length	Width	Height	Weight
HL – 40000 - DOC	1290 mm	205 mm	102 mm	7.7 kg

#### Typical Installation

Chains and hooks not included

